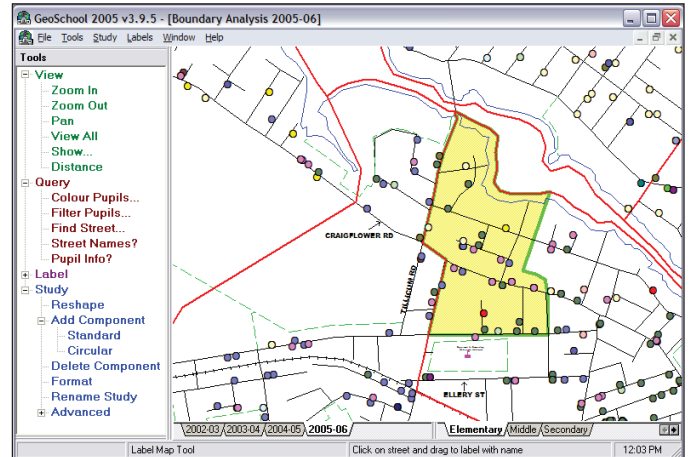
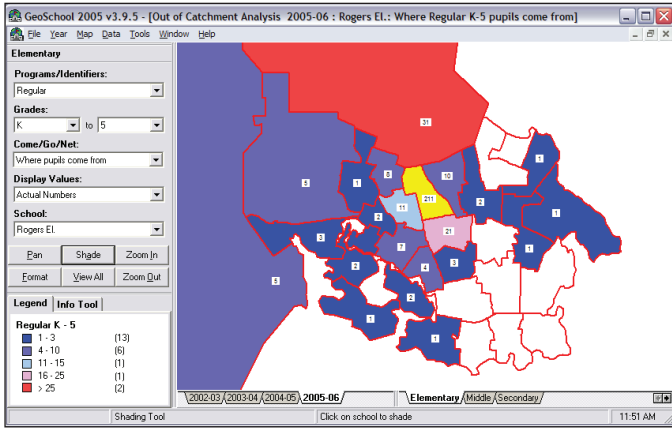


GeoSchool

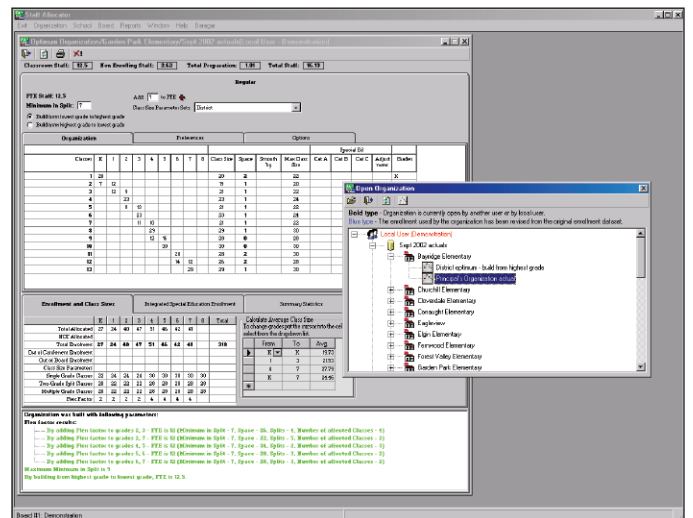
- Analyzes the impact of boundary changes, program re-locations and grade re-organizations.
- Instantly measures the extent of cross-boundary registrations and presents the result geographically.

- Increases accessibility to data, reports, graphs and maps to senior staff and eliminates the dependency on IT or other departments.
- Provides the data to support the need for new schools and to justify school closures.



Staff Allocator

- Optimizes staffing organizations at Elementary schools based on user-defined class size and composition parameters.
- Provides accurate and credible data that can be easily and quickly manipulated into 'what if' scenarios.
- Helps administrators minimize potential grievance situations.
- Exports reports required by the ministry.



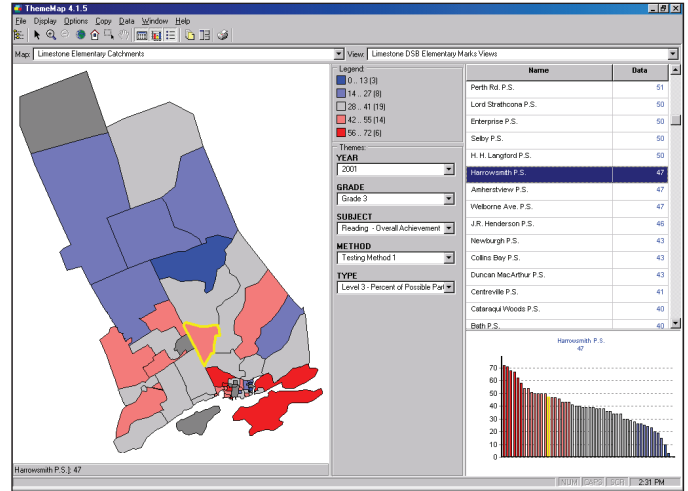
School Locator

- Instantly identifies which schools serve urban and most rural addresses.
- Can indicate to parents which schools offer the programs that best serve their child.

- Saves clerical time answering school location questions for parents and realtors.

ThemeMap

- Supplies a quick visual to help identify a school's performance based on multiple factors or indicators.
- Allows the user to consider test scores in a demographic context.
- Identifies schools with exemplary practices in subjects, grades or both for best practises development in the context of socio- economic characteristics.
- Provides the ability to create Super Indicators which synthesizes data and simplifies analysis.
- A tool for senior staff to focus on policy development.
- Includes census data from 1991, 1996, 2001 and 2006 for each school with a multitude of education relevant measures.



Demographic Dynamics

- Allows the user to accurately forecast enrolment.
- Measures the impact of new housing, and the effect of migration and immigration.
- Facilitates analysis of future staffing and capacity requirements.
- Used as a presentation tool to provide critical data at public meetings.

